

TABELABILITARE  
 Panel: Științebiologiceși biomedicale (P3), Comisia Medicină

STANDARDEMINIMALENECESARE ȘIOBLIGATORIPENTRU CONFERIREA TITLURILORDIDACTICEDIN  
 ÎNVĂȚĂMÂNTUL SUPERIORȘI AGRADELOR PROFESIONALEDE CERCETARE- DEZVOLTARE  
 (cf. Ordinului 6129/20.12.2016 publicat în Monitorul Oficial al României, Partea I, nr. 123 din 15 februarie 2017)

Nr. crt	Tipulactivității	Factor de impact
1	2	3
	Articole publicate in calitate de autor principal, prim autor sau autor corespondent	
1	Checherita, Laura Elisabeta; Stamatin, Ovidiu; Constantinescu, Aurora; Mannuc, D. et al. <b>The Study of Biochemistry on Myorelaxation of Manducatory Muscles by Influence of Botulinic Toxine in the Context of Oral Rehabilitation in SDSS Patients</b> REVISTA DE CHIMIE Volume: 70 Issue: 4 Pages: 1218-1222 Published: APR 2019	1,412
2	Checherita, Laura Elisabeta; Lupu, Iulian Costin; Stamatin, Ovidiu; Mannuc, Daniela. et al. <b>Clinical and Biochemical Parameters in Functional and Aesthetic Prosthetic Treatment of Dysfunctional Syndrome of the Stomatognathic System, REVISTA DE CHIMIE</b> Volume: 69 Issue: 12 Pages: 3736-3739 Published: DEC 2018	1,412
3	Mensch, Karoly; Szarka, Krisztina; Mensch, Henrik; Mannuc, Daniela; et al. <b>PCR Technique Assisting the Early Diagnosis of Human Papillomavirus A retrospective clinical study, REVISTA DE CHIMIE</b> Volume: 69 Issue: 10 Pages: 2781-2787 Published: OCT 2018	1,412
4	Checherita, Laura Elisabeta; Lupu, Iulian Costin; Stamatin, Ovidiu; Mannuc, Daniela; et al., <b>Aesthetic and Functional Oral Rehabilitation with Occlusal Trays, Ultrasonotherapy and Tolperison Hydrochloride Treatment in Patients with Dysfunctional Syndrome of Stomatognathic System and Muscular Affectation, REVISTA DE CHIMIE</b> Volume: 69 Issue: 7 Pages: 1752-1755 Published: JUL 2018	1,412

5	Checherita, Laura Elisabeta; Burlea, Lucian Stefan; Stamatin, Ovidiu; Manuc, Daniela; et al. <b>Impact of Ibruprofen Medication and Prosthetic Esthetical Treatment in Elderly Patients with Temporal Mandibular Joint Disorders and Depression</b> , REVISTA DE CHIMIE Volume: 69 Issue: 4 Pages: 831-836 Published: APR 2018	1,412
6	Voina, Andreea; Topor, Alexandru; Alecu, Georgeta; Manuc, Daniela; et al. <b>INTEGRATED SENSORS NETWORKS INTO AN ACQUISITION PLATFORM FOR THE AIR QUALITY MONITORING</b> , REVUE ROUMAINE DES SCIENCES TECHNIQUES-SERIE ELECTROTECHNIQUE ET ENERGETIQUE Volume: 62 Issue: 3 Pages: 305-310 Published: JUL-SEP 2017	1,114
7	Carausu, Elena Mihaela; Checherita, Laura Elisabeta; Stamatin, Ovidiu; Manuc, Daniela; et al., <b>Study of Biochemical Level for Mg and Ca-Mg Imbalance in Patients with Oral Cancer and Potentially Malignant Disorder and their Prostetical and DSSS Treatment</b> , REVISTA DE CHIMIE Volume: 67 Issue: 10 Pages: 2087-2090 Published: OCT 2016	1,232
8	Nisipeanu, Steluta Elisabeta; Pece, Stefan; Ivan, Iulian Madalin; Manuc, Daniela; et al., <b>APPLICATION OF SPECIFIC MODELS AND SOFTWARE FOR IDENTIFICATION, ASSESSMENT AND PREVENTION OF OCCUPATIONAL RISKS IN THE ROMANIAN HEALTHCARE SECTOR</b> , ENVIRONMENTAL ENGINEERING AND MANAGEMENT JOURNAL Volume: 13 Issue: 6 Pages: 1537-1541 Published: JUN 2014	1,085
9	Batca, V.; Jitea, N.; Albita, O.; Manuc, Daniela; et al. <b>The efficiency of lumbar transperitoneal laparoscopic sympathectomy-100 cases revue</b> , CHIRURGIA Volume: 106 Issue: 5 Pages: 591-597 Published: SEP-OCT 2011	0,375
10	Domnariu, C. D.; Furtulescu, F.; Manuc, D., <b>Body mass index of Romanian adults and relation to self-perception of weight status</b> , EUROPEAN JOURNAL OF PUBLIC HEALTH Volume: 20 Supplement: 1 Pages: 264-265 Published: NOV 2010	2,267
11	Totu, Eugenia Effimie; Manuc, Daniela; <b>Multisensor for Clinical Analysis with Impact on Public Health Evaluation</b> REVISTA DE CHIMIE Volume: 59 Issue: 9 Pages: 947-951 Published: SEP 2008	0,389
12	Totu, E. Effimie; Ruse, E.; Ghica, I.; Manuc, Daniela; et al. <b>Sensitive device for ions of biological interest</b> OPTOELECTRONICS AND ADVANCED MATERIALS-RAPID COMMUNICATIONS Volume: 2 Issue: 8 Pages: 502-506 Published: AUG 2008	0,224
	<b>Total FCIA P</b>	12,758
	Articole publicate in calitate de coautor	

1	Necula, George; Popovici, Odette; Manuc, Daniela; et al. <b>Characterization of post-pandemic influenza virus circulation in southern region of Romania during 2010-2014, INFECTION GENETICS AND EVOLUTION</b> , Volume: 69 Pages: 85-92 Published: APR 2019	2,545
2	Pop, Silvia Izabella; Chiocean, Radu; Bratu, Dana Cristina; Manuc, Daniela. et al. <b>Surface Properties and Maximum Insertion Energy of Sterilized Orthodontic Mini-Implants with Different Chemical Materials</b> , REVISTA DE CHIMIE Volume: 69 Issue: 11 Pages: 4118-4120 Published: NOV 2018	1,412
3	Sita, Dan Dragos; Brezeanu, Ligia; Bica, Cristina; Manuc, Daniela; et al. <b>Stress Variation in the Orthodontic Tipping Phenomenon Analysis through the finite element method</b> , REVISTA DE CHIMIE Volume: 69 Issue: 8 Pages: 1992-1995 Published: AUG 2018	1,412
4	Mazilu, Laura; Stanculeanu, Dana Lucia; Gheorghe, Andreea Daniela; Manuc, Daniela. et al , <b>Specific Adverse Effects of Bevacizumab in the Treatment of Non-Squamous Non-Small Cell Lung Cancer (NSCLC) in Clinical Practice</b> , REVISTA DE CHIMIE Volume: 69 Issue: 12 Pages: 3644-3647 Published: DEC 2018	1,412
5	Suceveanu, Andra Iulia; Stoian, Anca Pantea; Parepa, Irinel; Manuc, Daniela; et al. <b>Gut Microbiota Patterns in Obese and Type 2 Diabetes (T2D) Patients from Romanian Black Sea Coast Region</b> , REVISTA DE CHIMIE Volume: 69 Issue: 8 Pages: 2260-2267 Published: AUG 2018	1,412
6	Neamtu, Marius Cristian; Rusu, Ligia; Neamtu, Oana Maria; Manuc, Daniela; et al. <b>Analysis of neuromuscular parameters in patients with multiple sclerosis and gait disorders</b> , ROMANIAN JOURNAL OF MORPHOLOGY AND EMBRYOLOGY Volume: 55 Issue: 4 Pages: 1423-1428 Published: 2014	0,659
7	Traistaru, Rodica; Enachescu, Viorela; Manuc, Daniela; et al., <b>Multiple right schwannoma</b> , ROMANIAN JOURNAL OF MORPHOLOGY AND EMBRYOLOGY Volume: 49 Issue: 2 Pages: 235-239 Published: 2008	0
8	Jelihovschi, Igor; Drochioi, Cristian; Badescu, Aida Corina; Manuc, Daniela; et al., <b>Comparison of Sampling Techniques For qPCR Quantification of Periodontal Pathogens</b> , REVISTA DE CHIMIE Volume: 68 Issue: 12 Pages: 2853-2856 Published: DEC 2017	1,412
	Hirsch Index	6

CITARI  
INDEX  
HIRSCH

Methods for Data Selection in Medical Databases: The Binary Logistic Regression - Relations with the Calculated Risks

WEB OF SCIENCE

15



Published in PROCEEDINGS OF WORLD ACADEMY OF SCIENCE, ENGINEERING AND TECHNOLOGY, VOL 28 2008

Study of Biochemical Level for Mg and Ca-Mg Imbalance in Patients with Oral Cancer and Potentially Malignant Disorder and their Prostetical and DSSS Treatment

WEB OF SCIENCE

13



Published in REVISTA DE CHIMIE 2016

Multiple right schwannoma

WEB OF SCIENCE

10



Published in ROMANIAN JOURNAL OF MORPHOLOGY AND EMBRYOLOGY 2008

NUTRITIIONAL STATUS OF PATIENTS WITH DIGESTIVE CANCERS


WEB OF SCIENCE

8



Published in INTERDIAB 2017: DIABETES MELLITUS IN INTERNAL MEDICINE 2017

Multisensor for Clinical Analysis with  
Impact on Public Health Evaluation

WEB OF SCIENCE 

7



Published in REVISTA DE CHIMIE  
2008

Comparison of Sampling Techniques  
For qPCR Quantification of Periodontal  
Pathogens

WEB OF SCIENCE 



Published in REVISTA DE CHIMIE  
2017

5 → cea  
de a 6<sup>a</sup> etapă  
este anexată

APPLICATION OF SPECIFIC MODELS  
AND SOFTWARE FOR  
IDENTIFICATION, ASSESSMENT AND  
PREVENTION OF OCCUPATIONAL  
RISKS IN THE ROMANIAN  
HEALTHCARE SECTOR


WEB OF SCIENCE 

4



Published in ENVIRONMENTAL  
ENGINEERING AND MANAGEMENT  
JOURNAL  
2014

Aesthetic and Functional Oral  
Rehabilitation with Occlusal Trays,  
Ultrasonotherapy and Tolperison  
Hydrochloride Treatment in Patients  
with Dysfunctional Syndrome of  
Stomatognathic System and Muscular  
Affectation

WEB OF SCIENCE 

3



Published in REVISTA DE CHIMIE  
2018

Gut Microbiota Patterns in Obese and Type 2 Diabetes (T2D) Patients from Romanian Black Sea Coast Region

WEB OF SCIENCE

3



Published in REVISTA DE CHIMIE  
2018

Stress Variation in the Orthodontic Tipping Phenomenon Analysis through the finite element method

WEB OF SCIENCE

1



Published in REVISTA DE CHIMIE  
2018

< 1 2 3 >

*Daniela An  
Manuc*



Contact

Navigate

About  
US

Se

Researc

Se

Journals

Bl

Publicat

@

Instituti

API

Our Mis

The Co

Jobs

In the Pr

# The Effect of Carbonated Natural Mineral Water on Oxidative Stress in Experimental Myocardial Ischemia

GABRIELA DOGARU<sup>1</sup>, ADRIANA BULBOACA<sup>2</sup>, IOANA STANESCU<sup>3</sup>, VASILE RUS<sup>4</sup>, BODIZS GYORGY<sup>5</sup>, LORENA CIUMARNEAN<sup>6</sup>, CONSTANTIN MUNTEANU<sup>7</sup>, PAUL MIHAI BOARESCU<sup>8</sup>, ADRIANA NEAGOS<sup>9\*</sup>, DANA FESTILA<sup>9</sup>

<sup>1</sup>Iuliu Hatieganu University of Medicine and Pharmacy, Department of Physical Medicine and Rehabilitation, 43 Victor Babes Str., 400012, Cluj-Napoca, Romania

<sup>2</sup>Iuliu Hatieganu University of Medicine and Pharmacy, Department of Pathophysiology, 43 Victor Babes Str., 400012, Cluj-Napoca, Romania

<sup>3</sup>Iuliu Hatieganu University of Medicine and Pharmacy, Department of Neurology, 43 Victor Babes Str., 400012, Cluj-Napoca, Romania

<sup>4</sup>University of Agricultural Sciences and Veterinary Medicine, Department of Cell Biology, Histology and Embriology, 3-5 Calea Manastur, 400375, Cluj-Napoca, Romania

<sup>5</sup>Clinical Rehabilitation Hospital, 46-50 Viilor Str, 400066, Cluj-Napoca, Romania

<sup>6</sup>Iuliu Hatieganu University of Medicine and Pharmacy, 5th Department of Internal Medicine, 43 Victor Babes Str., 400012, Cluj-Napoca, Romania

<sup>7</sup>Emergency Clinical Hospital Bagdasar Arseni, Department of Medical Rehabilitation, 12 Berceni Road, 041915, Bucharest, Romania

<sup>8</sup>University of Medicine, Pharmacy, Science and Technology, Faculty of Dental Medicine, ENT Department, 38 Gheorghe Marinescu Str., Targu Mures, Romania

<sup>9</sup>Iuliu Hatieganu University of Medicine and Pharmacy, Department of Orthodontics, 43 Victor Babes Str., 400012, Cluj-Napoca, Romania

*Natural therapeutic factors are widely used as an important adjuvant therapy in various cardiovascular and cerebrovascular disorders. The aim of this study was to assess the role of balneal therapy on oxidative stress parameters in experimental myocardial ischemia induced in rats. 5 groups of 8 rats were used as follow: group 1- control group; group 2- group swimming in distilled water (DW); group 3- group with myocardial ischemia (MI); group 4- group with MI swimming in DW; group 5 - group with MI and swimming in carbonated mineral water (CMW). Myocardial ischemia was induced with Isoproterenol. The following oxidative stress/antioxidant blood parameters were assessed for each animal: nitric oxide (NOx), malondialdehyde (MDA), total oxidative stress (TOS), catalase (CAT) and total antioxidant capacity of plasma (TAC). In group 5 all parameters assessed were significantly improved compared with group 3 and 4. Carbonated mineral water can be used as an adjuvant therapy for improving oxidative stress/antioxidant status in patients with cardiac ischemia, in order to reduce the amplitude of ischemic lesions and to contribute as a prophylactic therapy to a better quality of life for these patients. Continuing this research in humans through clinical studies would be warranted.*

**Keywords:** carbonated mineral water, oxidative stress, antioxidant plasma capacity, myocardial ischemia

Baile Tusnad spa resort, through the presence of natural therapeutic factors including natural carbonated mineral waters and mofettes with a vasodilator effect, is recommended for the prophylaxis and rehabilitation treatment of cardiovascular diseases such as hypertension stage 1 and 2, stable chronic ischemic heart disease, chronic peripheral circulatory arterial and venous disorders [1]. Some authors believe that carbon dioxide (CO<sub>2</sub>) baths can be an effective therapeutic method for the rehabilitation of coronary diseases, myocardial infarction, stroke [2], for the treatment of chronic venous insufficiency, inflammatory diseases [3]. The therapeutic effects of carbonated mineral baths are based on the action of carbon dioxide and less on the pharmacodynamics action of mineral salts in the composition of mineral water. A study on the molecular mechanism showed that CO<sub>2</sub>-induced vasodilatation in peripheral blood vessels is linked to the activation of the nitric oxide-cyclic guanosine monophosphate signalling cascade and angiogenesis by induction of synthesis of vascular endothelial growth factor (VEGF) [4]. Another mechanism of CO<sub>2</sub> is the Bohr effect, which seems to be responsible for changes following its

application, a decrease in oxygen-haemoglobin concentrations, an increase in partial oxygen pressure, and a reduction of peripheral tissue pH [5]. A recent study (Italy) investigated the specific effects of successive carbon dioxide (CO<sub>2</sub>) baths (carbon dioxide-enriched water, 1553 mg CO<sub>2</sub> per kg water) on the release of plasma free radicals and total antioxidant capacity in patients with stage 2 chronic obliterate arteriopathy, demonstrating a reduction of oxidative stress after 2 weeks of balneal therapy with carbonated mineral water [4].

Although numerous uses of carbonated mineral baths have been reported, their effect in ischemic heart disease is not yet sufficiently known. Ischemic heart disease is caused by coronary atherosclerosis, its pathogenesis being explained through the hypothesis of endothelial dysfunction; the role of oxidative stress and antioxidant systems in cardiovascular diseases is in the process of being researched [6]. The beneficial effects of CO<sub>2</sub> on ischemic vascularization have been documented in many animal models [7].

The aim of this study was to observe the effect of carbonated mineral water on oxidative stress/antioxidant

\*email: neagos.adriana@gmail.com; Phone: 0744952183

parameters in plasma, associated with experimental myocardial ischemia in rats, in order to evaluate if there is a beneficial effect of this non-pharmacological treatment. The effect was evaluated by assessing plasma oxidative stress parameters and antioxidant status, and by histopathology examination of myocardial tissue.

### Experimental part

All the procedures of this experimental study were approved by the Ethics Committee of Iuliu Hatieganu University of Medicine and Pharmacy Cluj-Napoca (protocol approval No.391/16.10.2018) and Veterinary Sanitary Committee (Approval No. 146/29.11.2018) and were in accord with the rules of European Convention for the Protection of Vertebrate Animals used for Experimental and other Scientific Purposes. We used Wistar-Bratislava albino rats weighing 250-300 g, procured from the Department from the Animal Department of the Faculty of Medicine and Pharmacy Cluj-Napoca, Cluj-Napoca, Romania and were kept in polypropylene cages at constant temperature ( $24 \pm 2^\circ\text{C}$ ),  $50 \pm 15\%$  humidity, and light-dark regime. All the measures were taken to reduce the animal suffering.

### Experimental Design

Five groups with eight animals/group were used by random allocation of rats in the groups. Appropriate protocols were applied to each group (table 1). Myocardial ischemia was induced by a unique dose of Isoproterenol (45 mg/BW, s.c. route) [8]. The animals were introduced in water for swimming for 20 min, each day, for 2 weeks, water temperature  $32^\circ\text{C}$ . Group 2 and 4 swam in distilled water, and the group 5 in carbonated mineral water (CMW) (spring no. 7-Tusnad, Romania). The composition of carbonated mineral water was as following: chlorine 49.999 mmol/L, bromine 0.020 mmol/L, sulphates 0.0666 mmol/L,  $\text{HCO}_3^-$  13.000 mmol/L, sodium 44.161 mmol/L, potassium 2.307 mmol/L, calcium 4.698 mmol/L, magnesium 3.088 mmol/L, iron 0.376 mmol/L, carbon dioxide 27.000 mmol/L, hydrogen sulphide ( $\text{H}_2\text{S}$ ) 122.036/L. pH 5.8 Total mineralization is of the water is 122.036

mmol/L. general characteristics of this water refers as an carbonated, ferruginous, chlorinated, bicarbonate, sodium, hypotonic natural mineral water. Oxidative stress parameters and antioxidant plasma status were assessed following the same method as Bulboaca *et al.* [9].

### Histopathology examination

At the end of the experiment myocardial tissue samples were taken from each animals and prepared for optic microscopic examination. Myocardium tissue samples were about 4 mm thickness and were treated with Stieve solution for 48 h. The sample were further dehydrated with ethylic alcohol, treated with butyric alcohol and included in paraffin. The paraffin block was used for sample cutting ( $5\ \mu\text{m}$  thickness each sample) and tricrom Goldner stained was made. The sample observation was made by optic microscope (Olympus BX41).

### Analysis of the data

Statistical analysis was made by Statistix 10 software, and presented as mean  $\pm$  SD. Mann-Whitney test was used for statistical comparisons, and  $p < 0.05$  was considered statistically significant.

### Results and discussions

The values of oxidative stress /antioxidant status parameters are presented in table 2.

The comparison between groups is shown in table 3.

Comparing group 2 with group 1 a statistical significant difference was noted ( $p < 0.0001$ ), regarding the plasma level of NOx and TOS without significant changes for antioxidative status. These results showed that physical activity as is swimming itself is associated with increased oxidative stress. Similar results were noted by other studies [10]. At comparison of group 3 with group 2 and 1, all the parameter changes were found to have a high significant statistic differences ( $p < 0.00001$ ). Similar results were found comparing group 4 with group 2 ( $p < 0.00001$ ) for all studied parameters. Comparison of oxidative parameters and antioxidant plasma status for group 4 and 3, was found

Group No	Group description
1	Control group
2	Swimming in distilled water
3	Isoproterenol induced myocardial ischemia
4	Isoproterenol induced myocardial ischemia - swimming in DW*
5	Isoproterenol induced myocardial ischemia - swimming in CMW**

\*DW = distillate water, \*\* CMW = carbonated mineral water

**Table 1**  
EXPERIMENTAL GROUPS, PROTOCOL  
DESCRIPTION

Group number	NOx ( $\mu\text{mol/L}$ )	MDA (pmol/L)	TOS ( $\mu\text{mol/L}$ )	CAT U/ml	TAC (Eq/L)
1.	$25.82 \pm 1.03$	$2.275 \pm 0.21$	$16.25 \pm 1.39$	$18.78 \pm 1.12$	$1.32 \pm 0.14$
2.	$30.71 \pm 1.19$	$2.30 \pm 0.20$	$21.90 \pm 2.06$	$18.96 \pm 1.03$	$1.23 \pm 0.11$
3.	$43.13 \pm 1.27$	$3.355 \pm 0.22$	$47.34 \pm 1.07$	$14.8 \pm 1.12$	$0.69 \pm 0.064$
4.	$43.675 \pm 1.04$	$3.34 \pm 0.19$	$47.25 \pm 0.96$	$14.68 \pm 1.06$	$0.67 \pm 0.06$
5.	$35.8625 \pm 1.52$	$3.35 \pm 0.22$	$39.57 \pm 1.53$	$16.625 \pm 1.60$	$0.931 \pm 0.08$

**Table 2**  
OXIDATIVE STRESS PARAMETERS  
(MEAN  $\pm$  STANDARD DEVIATION)

1 vs. 2	$P < 0.00001$	$P = 0.370923$	$P < 0.00001$	$P = 0.375402$	$P = 0.107321$
3 vs. 1	$P < 0.00001$	$P < 0.00001$	$P < 0.00001$	$P < 0.00001$	$P < 0.00001$
3 vs. 2	$P < 0.00001$	$P < 0.00001$	$P < 0.00001$	$P < 0.00001$	$P < 0.00001$
4 vs. 2	$P < 0.00001$	$P < 0.00001$	$P < 0.00001$	$P < 0.00001$	$P < 0.00001$
4 vs. 3	$P = 0.186$	$P = 0.472$	$P = 0.436$	$P = 0.419$	$P = 0.279$
5 vs. 2	$P < 0.00001$	$P < 0.00001$	$P < 0.00001$	$P < 0.0018$	$P < 0.000016$
5 vs. 3	$P < 0.00001$	$P = 0.48$	$P < 0.00001$	$P = 0.00973$	$P < 0.00001$
5 vs. 4	$P < 0.00001$	$P = 0.49$	$P < 0.00001$	$P = 0.095$	$P = 0.096$

**Table 3**  
GROUPS COMPARISONS (P VALUES)



to have no significant changes. Comparing group 5 with group 3 and 2, all the parameters had statistical significant changes except MDA levels. For group 5 vs. group 4, significant differences were found regarding NOx values and TOS. Improving NOx level can result in improvement of endothelial function, NOx being a valuable biomarker for endothelial function, and also improve endothelium dependent vasodilatation [11](table 3).

#### Histopathology assessment results

Histopathology assessment for animals in group 3 showed cells with homogenous cytoplasm, inflammatory cells, mostly in perivascular area, and perivascular edema. (fig. 1) The fibrotic tissue was also present in same territories (fig 2). These histopathology changes are associated with ischemia. The histopathology assessment for group 4 showed no remarkable differences compared with group 3, inflammatory cells, perivascular edema and extensive fibrotic tissue were still present and were similar to those in group 3 (fig. 3 and 4). Assessing the samples from group 5 significantly differences were observed in histopathology examination. The inflammatory cells were reduced as number but with perivascular edema persistency, and fibrotic tissue was almost absent (fig5). The conjunctive tissue proliferation was also observed in perivascular areas (fig 6). Histopathology results showed a visible improvement of tissue structure according with associated changes with myocardial ischemia regarding the inflammatory cells abundance, peri inflammatory edema and fibrotic tissue.

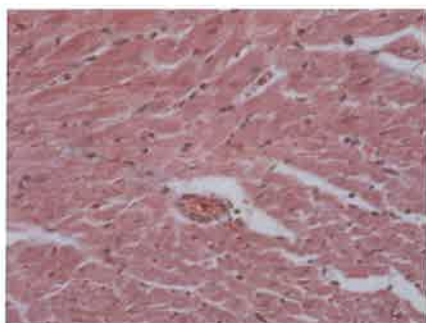


Fig. 1.  
Histopathological  
aspect of  
myocardial tissue -  
group 3

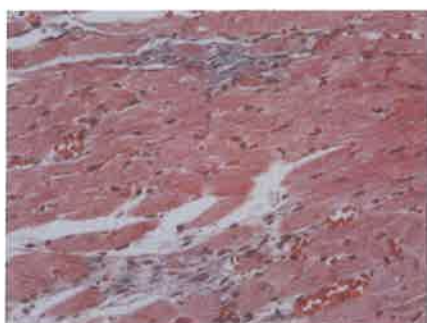


Fig. 2.  
Histopathology  
aspect of  
myocardial tissue -  
group 3

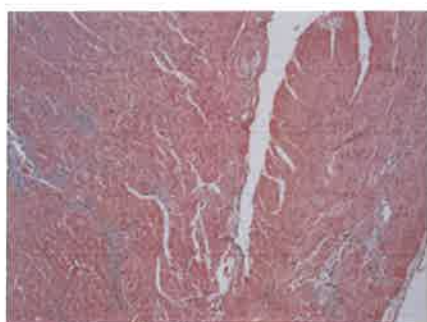


Fig. 3.  
Histopathology  
aspect of myocardial  
tissue -group 4



Fig. 4. Histopathology  
aspect of myocardial  
tissue -group 4

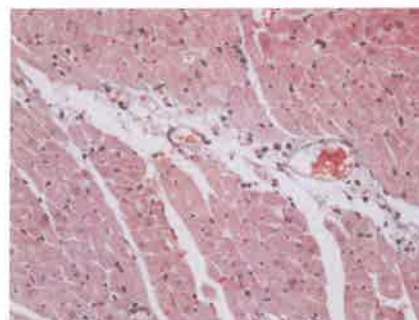


Fig.  
5. Histopathology  
aspect of myocardial  
tissue -group 5

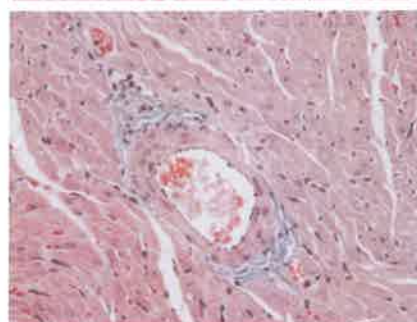


Fig. 6. Histopathology  
aspect of myocardial  
tissue -group 5

#### The effect of CMW on oxidative stress/antioxidant parameters

As a valuable therapy for cardiovascular diseases wide used in European countries, carbonated mineral water effects was studied in various papers. The beneficial effect of CO<sub>2</sub>, was demonstrated, its vasodilatation effect contributing to improving of vascular blood flow [12]. The composition of CMW used in this experimental study is rich in carbon dioxide, this property being important in reducing ischemic effects occurred after Isoproterenol administration, proved by significantly improving of all the oxidative stress parameter, and also improved characteristic of histopathology changes consequently to myocardial ischemia. The improving of myocardial blood flow under the carbon dioxide action was also found to occur at the similar effect as the adenosine action [13]. The effect of carbon dioxide seems to be similar with those exert by carbon monoxide and nitric oxide, inducing vasodilatation associated with smooth cells proliferation reduction, and having an inhibitor effect on platelets aggregation [14,15]. In vivo animal studies with coronary vessels vasoconstriction follow by stenosis (induced by caffeine), vasodilatation effect activity of carbon dioxide was demonstrated with significantly improved coronary blood flow (PEI studies of the heart) [16]. The oxidative stress contribution to ischemia has been intensively studied, with a special attention given to quantitative assessment of oxidative stress parameters and their relationship with the ischemia progression and consequences. There are other experimental studies that proved that immersion in a bath with carbon dioxide content is floored by an efficient absorption of carbon dioxide trough the skin with an important improving of tissues perfusions. The absorption of carbon dioxide due

to immersion in CMW was sustained by elevated levels of carbon dioxide concentration in subcutaneous tissues [17]. Moreover, was also demonstrated, an improving of oxygen delivery to the tissues, by haemoglobin, due to shifts of the haemoglobin dissociation curve to the right [17]. By improving the NO levels CMW treatment can contribute to reducing endothelial dysfunction in patients with arterial stenosis due to atherosclerotic process [18]. Other cardiovascular effects of carbon dioxide rich baths could be bradycardia, reducing blood pressure [4]. Our study also proved a significant reduction of MDA and total oxidative stress that are important contributors in ischemia progression and lesions amplification. Antioxidant status improvement can also constitute an essential factor that is beneficial in ischemic process limitation and rehabilitation. Detection and quantification of periodontal pathogens is of great importance in the clinical management of myocardial ischemia who is often associated with periodontal disease [19].

### Conclusions

From our knowledge, this is the first study which assessed the efficiency of CMW treatment effect in experimental myocardial ischemia with mineral waters with presented chemical and physical characteristics as above described. Baths with natural carbonated mineral water can be an effective therapeutic method in the treatment of cardiovascular diseases, but the periodic analysis of their physical and chemical properties is important. Further studies regarding their therapeutic efficacy and mechanism of action are required.

### References

1. DOGARU, G., RADULESCU, A., Therapeutic effects of carbonated mineral waters in cardiovascular rehabilitation, *Balneo Research Journal*, **6**, no.1, 2015, p. 36
2. DOGARU, G., ISPAS, A., BULBOACA, A., MOTRICALA, M., STANESCU, I., Influence of balneal therapy at Baile Tu'nad on quality of life of post-stroke patients, *Balneo Research Journal*, **8**, no.4, 2017, p. 201
3. TORIYAMA, T., KUMADA, Y., MATSUBARA, T., MURATA, A., OGINO, A., HAYASHI, H., NAKASHIMA, H., TAKAHASHI, H., MATSUO, H., KAWAHARA, H., Effect of artificial carbon dioxide foot bathing on critical limb ischemia (Fontaine IV) in peripheral arterial disease patients, *Int Angiol.*, **21**, no.4, 2002, p. 367
4. DOGLIOTTI, GL., GALLJERA, E., IORIO, E., DE, BERNARDI, DI., VALSERRA, M., SOLIMENE, U., CORSI MM, Effect of immersion in CO2-enriched water on free radical release and total antioxidant status in peripheral arterial occlusive diseases. *Int Angiol.*, **30**, no. 1, 2011, p.12
5. FABRY, R., MONNET, P., SCHMIDT, J., et al. Clinical and microcirculatory effects of transcutaneous CO2 therapy in intermittent claudication, Randomized double-blind clinical trial with a parallel design, *Vasa*, **3**, no. 3, 2009, p. 213

6. BOBESCU, E., Oxidative stress and antioxidant systems evaluation in cardiovascular disease, *Revista Romana de Medicina de Laborator*, **8**, no.3, 2007, p.13
7. ELBAZ, M., VEGF in therapeutic coronary and peripheral artery angiogenesis, *Pathol Biol.*, **47**, no.4, 1999, p. 380
8. BOARESUCU, PM, CHIRILA, I., BULBOACA, AE., BOCSAN, IC., POP, RM, GHEBAN, D., BOLBOACA, SD., Effects of Curcumin Nanoparticles in Isoproterenol-Induced Myocardial Infarction, *Oxidative Medicine and Cellular Longevity*, doi.org/10.1155/2019/7847142.
9. BULBOACA, AE., PORFIRE, AS., TEFAS, I.R., BOARESUCU, PM, BOLBOACA, SD., STANESCU, IC., BULBOACA, AC., DOGARU, G., Liposomal Curcumin is better than Curcumin to alleviate complication in experimental diabetes mellitus, *Molecules*, **24**, no.5, 2019, p. 846
10. KAWAMURA, T., MURAOKA, I., Exercise-Induced Oxidative Stress and the Effects of Antioxidant Intake from a Physiological Viewpoint, *Antioxidants*, **5**, no.7, 2017, pii: E119. doi: 10.3390/antiox7090119.
11. SIRAGUSA, M., FLEMING, I., The eNOS signalosome and its link to endothelial dysfunction, *Pflugers Arch.*, **468**, no.7, 2016, p.125
12. FEIGL, ED., Coronary physiology, *Physiol Rev.*, **63**, 1983, p. 1
13. TROCHU, JN., ZHAO, G., POST, H., XU, X., BELARDINELLI, L., BELLONI, FL., HENZE, TH., Selective A2A adenosine receptor agonist as a coronary vasodilator in conscious dogs: potential for use in myocardial perfusion imagin., *J Cardiovasc Pharmacol.*, **41**, no.1, 2003, p.132
14. MORITA, T., MITSIALIS, SA., KOIKE, H., LIU, Y., KOUREMBANAS, S., Carbon monoxide controls the proliferation of hypoxic vascular smooth muscle cells, *J Biol Chem.*, **272**, 1997, p. 32804
15. BRUNE, B., ULLRICH, V., Inhibition of platelet aggregation by carbon monoxide is mediated by activation of guanylate cyclase, *Mol Pharmacol*, **32**, 1987, p. 497
16. YANG, HJ., DEY, D., SYKES, J., KLEIN, M., BUTLER, J., KOVACS, MS., SOBczyk, O., SHARIF, B., BI, X., KALI, A., COKIC, I., TANG, R., YUMUL, R., CONTE, AH, TSAFTARIS, SA., TIGHIOUART, M, LI, D., SLOMKA, PJ., BERMAN, DS., PRATO, FS., FISHER, JA., DHARMAKUMAR, R., Arterial CO<sub>2</sub> as a Potent Coronary Vasodilator: A Preclinical PET/MR Validation Study with Implications for Cardiac Stress Testing, *J Nucl Med.*, **58**, no.6, 2017, p. 953
17. KOMOTO, Y., NAKAO, T., SUNAKAWA, M., YOROZU, H., *Adv Exp Med Biol.*, **222**, 1998, p. 637
18. FORTE, M., CONTI, V., DAMATO, A., AMBROSIO, M., PUCA, AA., SCIARRETTA, S., FRAIL, G., VECCHIONE, C., CARRIZZO, A., Targeting Nitric Oxide with Natural Derived Compounds as a Therapeutic Strategy in Vascular Diseases, *Oxid Med Cell Longev.*, 2016, 7364138, doi: 10.1155/2016/7364138
19. JELIHOVSCHI, I., DROCHIOI, C., BADESCU, A.C., LUPUSORU, R.V., Munteanu, A.E., BARANDU, N., MANUC, D., SERBAN, R.I., COBZARU, R.G., RIPA, C.V., IANCU, L.S., Comparison of Sampling Techniques For qPCR Quantification of Periodontal Pathogens, *Rev.Chim.(Bucharest)*, **68**, no.12, 2017, p.

Manuscript received: 17.11.2018

Reprezentare  
de la 6<sup>a</sup> citare  
a lucrării noastre  
menționate.